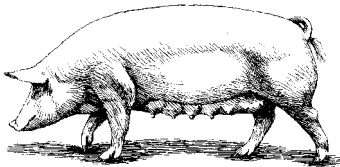
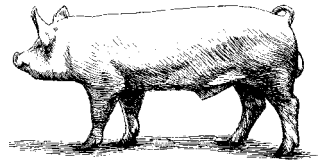


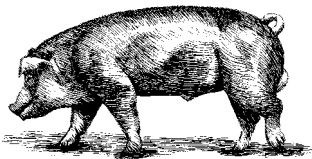
# Facts About The DanBred Pig Breeding Programme



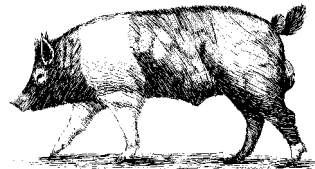
Danish Landrace



Danish Yorkshire



Danish Duroc



Danish Hampshire



THE FEDERATION OF DANISH PIG PRODUCERS AND SLAUGHTERHOUSES  
AXELBORG · AXELTORV 3 · DK-1609 COPENHAGEN V  
TELEPHONE +45 33 11 60 50 · TELEFAX +45 33 91 60 15  
E-MAIL: SEA@danbred.dk · WEB: <http://www.danbred.dk>

# Facts about the DanBred Pig Breeding Programme

## Breeds/Lines

Danish Landrace	Danish Duroc
Danish Yorkshire	Danish Hampshire

## Number of Sows

	Nucleus Herds	Multiplier Herds
Danish Landrace	2,950	23,000
Danish Yorkshire	2,050	19,000
Danish Duroc	1,650	
Danish Hampshire	450	
	7,100	42,000
Number of Herds	40	205

## Breeding Objectives

In Index:

- Daily Gain (0-30 kg)
- Daily Gain (30-100 kg)
- Feed Efficiency
- Pct Lean Meat in Carcass
- Litter Size (Landrace & Yorkshire)
- Body Structure
- pH
- Slaughter Loss

Using:

- Station Test (progeny, sib and performance test)  
(5,000 males per year)
- On farm performance test (70,000 males/females per year)
- Index Evaluation (Animal Model/BLUP)
- Economic Breeding Objectives
- Average = 100, SD = 10 for Landrace & Yorkshire  
SD = 15 for Duroc & Hampshire
- Recalculated every week

## Annual Genetic Progress 1995-1998

	Daily Gain 0-30 kg (g) 1998 only	Daily Gain 30-100 kg (g)	Feed Conver- sion kg/kg	Pct. Lean Meat	Litter Size	Body Structure
Danish Landrace	- 1.3	20.5	- 0.02	- 0.04	0.44	0.05
Danish Yorkshire	0.0	14.1	- 0.03	0.07	0.25	0.05
Danish Duroc	2.7	24.5	- 0.04	0.12		0.03
Danish Hampshire	1.9	16.2	- 0.04	0.18		0.02

## Production Level for DanBred Purebreds from the Central Testing Station

		Daily Gain 30-100 kg (g)	Feed Conver- sion kg/kg	Meat Percentage %	Litter Size
Danish Landrace	1995	961	2.39	61.6	11.4
	1996	944	2.42	62.0	11.9
	1997	932	2.44	61.9	12.3
	1998	939	2.38	60.6	13.0
Danish Yorkshire	1995	959	2.34	62.0	10.5
	1996	968	2.32	62.2	11.2
	1997	958	2.32	62.2	11.5
	1998	924	2.31	61.1	11.4
Danish Duroc	1995	935	2.35	60.1	
	1996	937	2.37	60.3	
	1997	942	2.35	60.3	
	1998	915	2.32	59.6	
Danish Hampshire	1995	870	2.43	62.1	
	1996	852	2.45	62.5	
	1997	833	2.42	62.8	
	1998	847	2.39	62.0	

## Heterosis Effect Found within the Danish Hybrid Programme:

### Fertility

Increased Litter Size (0.5-1.5 live born per litter)

- a) Using Danhybrid-LY females
- b) Using Danish Duroc or Danline-HD as a sire line

Reduced replacement rate (70% still in production after 4th litter).

## Daily Gain

Danish Duroc or Danline-HD as sire line reduces time to reach slaughter weight (100 kg) by approx. 10 - 15 days (from 175 to 163 days).

## Feed Conversion Ratio

Using Danish Duroc or Danline-HD as a terminal sire reduces feed conversion ratio by 0.10 - 0.20 (from 2.81 to 2.64).

## Annual Sales From the DanBred Pig Breeding Programme

Danish Landrace:	Females	7,000
Danish Yorkshire:	Females	5,000
Total purebred:	Females	12,000
Total purebred:	Males	5,100
Total hybrid:	Males	6,300
Total hybrid:	Females	212,000

## Production Results Using Danhybrid-LY Females and Duroc or Danline-HD Sires

Pigs liveborn per litter	11.8
Pigs weaned per litter	10.7
Age at weaning	27 days
Litters per sow per year including gilts	2.36
Pigs weaned per sow per year including gilts	24.8
Age at 30 kg	79 days
Age at 100 kg	163 days
Daily gain (30-100 kg)	847 g
Feed conversion ratio	2.61 kg/kg
Pct. lean meat in carcass	60.0